



- ✓ Easy to use
- ✓ Quick to record
- ✓ Convenient to link !



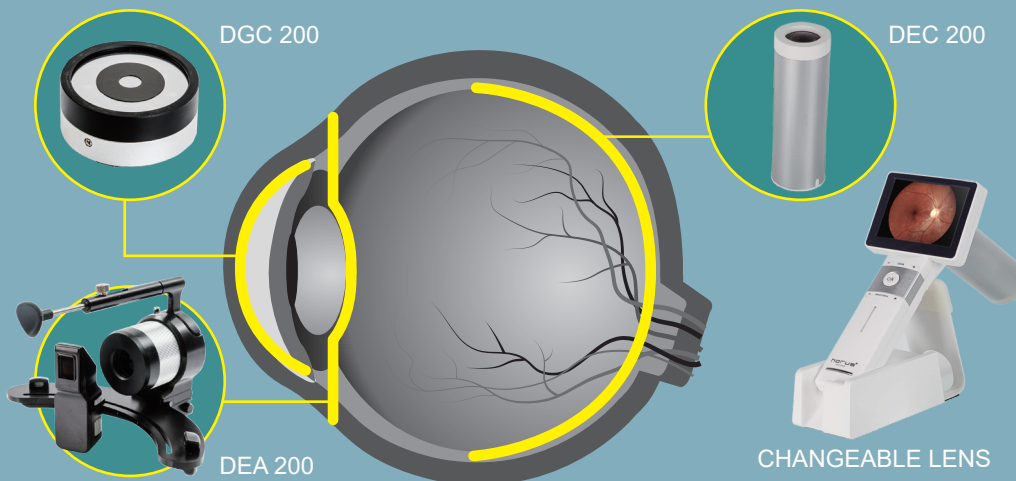
◀ DGC 200
Eye Surface
Camera

DEC 200 ▶
Eye Fundus
Camera

DEA 200 ▶
Eye Anterior
Lens

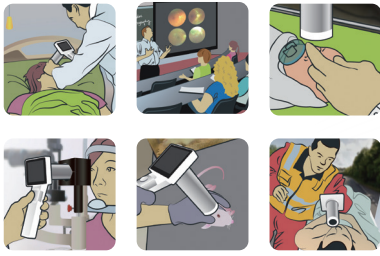
horus
SCOPE

5MP EYE CARE TOTAL SOLUTION



From anterior chamber to posterior chamber, the medical image can be easily captured by Horus scope with 5MP resolution!

Scenario



3.5" Touch screen



Wi-Fi / Bluetooth
USB / SD card



Cable lock hole

Mini USB

Pogo pad for charger

Micro HDMI

USB plug with lock

Magnetic charger

Integration For Software And Hardware-AI Screening

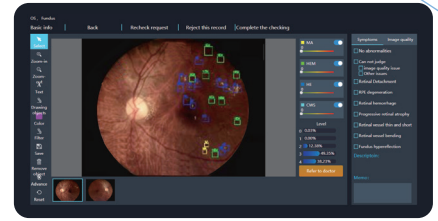
Power button

Indicator:

Power light (blue light)

Analyzing (white light)

Connection (amber light)



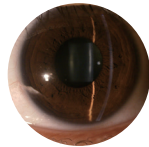
Medical image management system

Through The Scope



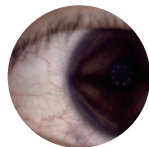
DEC 200

Field of view	View angle 45°
Dimension	20.10cm x 9.00cm x 20.30cm
Optical source	Natural white light emitting diode (LED) or infrared LED
Fixation targets	7 internal fixation targets
Operating distance	24mm interface
Weight	450 grams



DEA 200

Dimension	232mm x 160mm x 220mm
Optical source	LED
Magnification changer	10x and 16x
Slit length	10mm
Slit width	0.2mm · 0.2mm · 0.5mm · 2mm · 5mm · 10mm
Slit projection angle	Horizontal ± 45°
Filter	Blue, green
Operating distance	80mm
Weight	580 grams



DGC 200

FOV(D/H/V)	21mm x 16.4mm x 12.5mm
Dimension	10.70cm * 9.00cm* 20.30cm
Optical source	White light / blue light
Operating distance	50mm ~ 65mm
Weight	345 grams

Control Unit - DSC 300

Sensor		5 Megapixels (2560*1920)
LCD monitor		3.5" capacitive touch panel ; multi touch
Microphone		○
Speaker		○
File storage		Micro SD card (2 ~ 32G)
Interface	Wi - Fi	Embedded
	Bluetooth	Embedded
	Micro HDMI (1920 x 1080)	○
	Magnetic charger	○
	Mini USB	○
Function	Auto focus	○
	Auto capture (DEC 200 only)	○
	Auto exposure	○
	Quality check	○
Lens	DEC 200	○
	DEA 200	○
	DGC 200	○
Picture resolution		2560 x 1920
Video resolution		2560 x 1920
UVC resolution		640 x 480
Weight (included battery)		245 (295) grams

• Information contained in this leaflet is subject to change without prior notice.