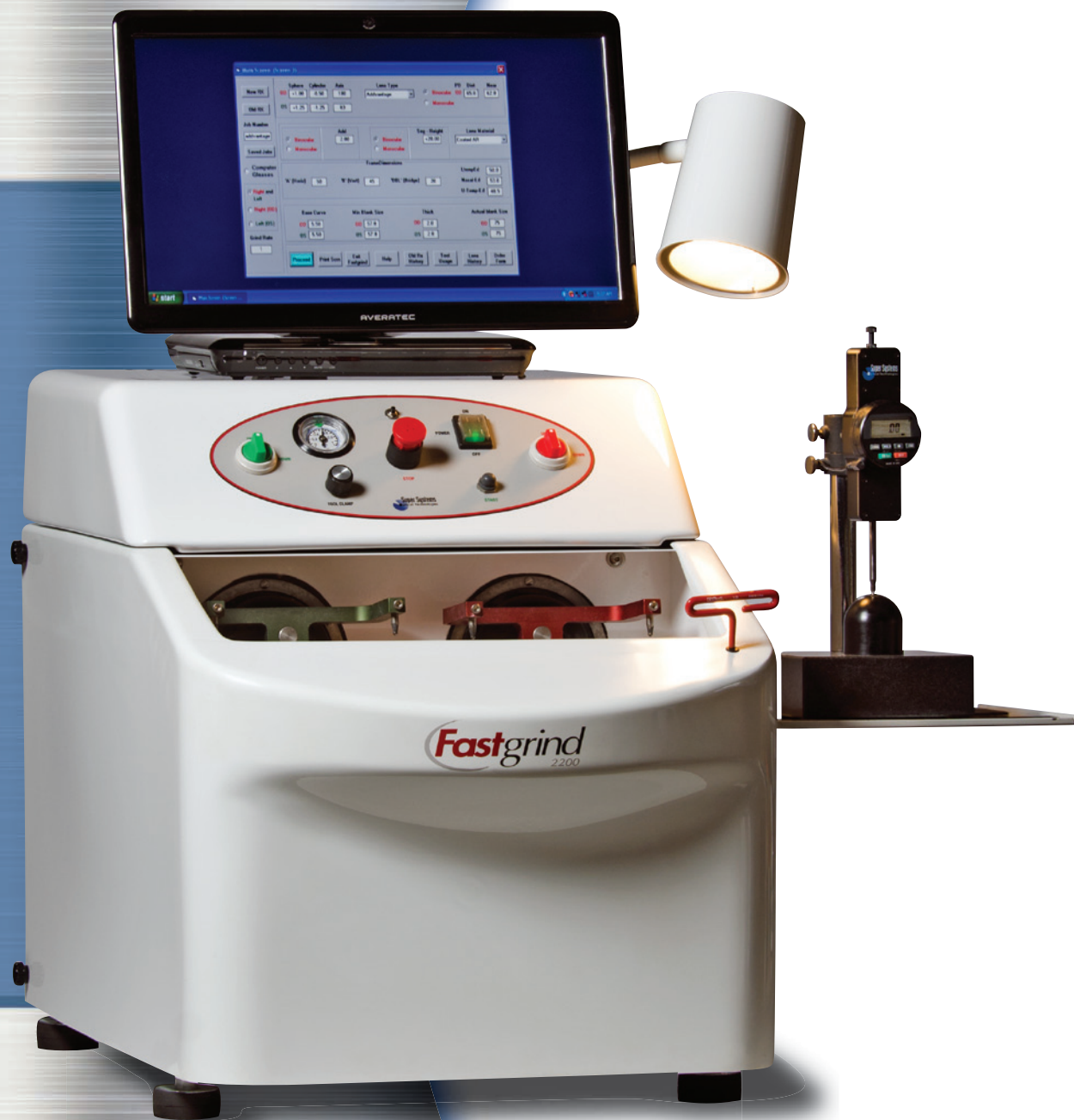


THERE IS NOTHING WRONG  
WITH MAKING MORE MONEY...

See How Modified Surfacing Can  
Take Your Practice into the Digital Age



Let us help grow your business,

See the **ADD VANTAGE HD™**  
"Digital Progressive"

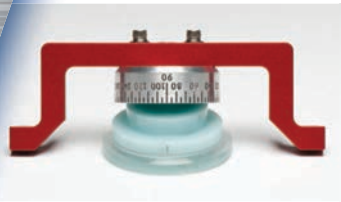
with **Fastgrind**  
2200

The

**Fastgrind**  
2200

# System

is built with **20 years** of Time Proven Technology.  
*New Innovation through software upgrades keeps your machine running like the day it was installed.*

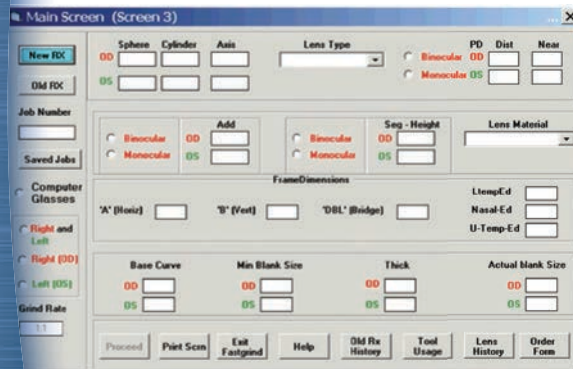


With extreme ease of use, modified surfacing only takes a few simple steps to produce Digital High-Definition Progressives and other lens types to prescription with controlled thickness in 12 Minutes. Lenses are provided pre-blocked to eliminate expensive equipment, valuable time & costly mistakes. The lenses are placed in the holder and rotated to the desired axis. You are now ready to produce the exact prescription.

**JUST ADD WATER:** The Fastgrind 2200 System uses a simple 3-Step process with 4 pads to generate, fine and polish a lens to prescription. The reusable Coarse Diamond Pad shapes the lens to a precise prescription and thickness. A Superfine Diamond Pad and Smoothing Pad are used to remove scratches and prepare the surface for polish. Finally, a polishing pad perfects the lens, leaving it with a brilliant finish.



Modified surfacing allows for a simple, affordable, and compact machine that produces Digital Lenses at minimal cost.



**SURFACING FOR DUMMIES:** The system provides ease of use through its software programming. The program provides the operator with step by step instructions, enabling inexperienced personnel to produce perfect lenses every time, making this machine accessible to any of your office staff. Simply enter your Rx into the program, which is laid out in the same format as if you were ordering from a lab. The program then guides the operator to select the proper lens and lap tool easily identified by numbering system.

**STREAMLINED PROCESS:** Align the axis marking on a pre-blocked lens from Super Systems, with the axis scale on the Lens Holder. Place the reusable diamond generating pad on the tool which is held in place with a friction pad. Clamp the lens and holder onto the pad and press start. The timing is automatic and the machine will stop when finished. Repeat this process with the smoothing and the polish pads. Individual digital gauge readings throughout the process determine the amount of grinding time and ensure accurate thickness control.

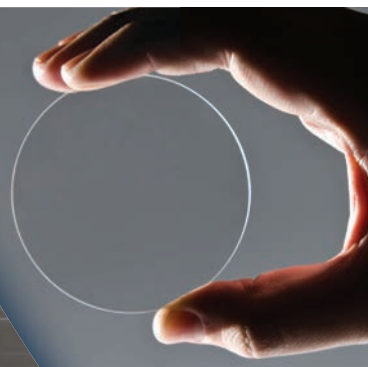


### Selection of Lenses Include:

HD Progressives (Regular & Short)  
FT-28, FT-35, 7x28,  
Blended, & Single Vision

### Options Include:

Photochromic, Polarized,  
& Premium AR Coating



**THE 12 MINUTE Rx:** Following smoothing and polishing, the disposable block is removed from the lens and it is ready for edging. The Fastgrind System leaves no mess, requiring only tap water and a standard electrical connection. It has never been easier to provide Same Day Customer Service! Fastgrind has been engineered to enable the small to large independent optical to grow their customer base and profits.



- World's Smallest Surfacing Unit
- Just Add Water – No Mess!
- Provide Same Day Service
- Grow your Practice & Profits
- Affordable for Small to Large Optical
- Installations Worldwide



Never worry about  
obsolescence;  
**Fastgrind**  
comes with a  
“Peace of Mind”  
lifetime parts warranty  
& unlimited  
customer support

## The **Fastgrind**

provides Long-Term ROI;  
Generating Profits within  
the First Month of Service



# Lens Surfacing Made **SIMPLE**

Purchasing a Fastgrind  
is Not Simply an Investment,

*It is a commitment  
to providing Exceptional  
Customer Service  
and Building a Long-Term  
Patient Relationship*



**Fastgrind**  
2200

## Fastgrind Specifications:

- Height: 23in/584mm
- Width: 20in/508mm
- Depth: 28in/711mm
- Cabinet Dimensions: 28in/711mm H x 32in/813mm W x 27in/686mm D
- Net Weight: 285lbs/129 Kg
- Shipping Weight: 320lbs/145 Kg
- Voltage: 115V US, 60 Hz; 230V Int'l, 50 Hz
- Inspection Lamp: 60W Bulb
- Air PSI: 80-100; built-in compressor
- Runs with standard tap water connection & garden hose fittings
- Re-circulating water system available if no plumbing is present
- Gravity drainage system used to expel water



## Fastgrind Key Features:

- Most machine processes are automated
- Machine, Computer, & Gauge transmit information electronically via software
- Final sale includes: Fast Grind Machine & Accessories, Lap Tools, Computer, Digital Gauge, and Cabinet
- Rx range +7.00 to -9.00 SPH and up to 3 Cylinder\*
- Software tracks and stores jobs and lenses for reordering
- Operator can manually adjust time if automated settings are not desired
- Machine controls lens thickness to ensure excellent cosmetic appearance

\* Depending on inventory selected