



# 500 ECO

TREATMENT CHAIR



E

ENJOY QUALITY AND DESIGN

# 500 ECO

Art. Nr. : 1500 0008

Perfect for I.V.I. treatments. Direct power connection and the integrated power supply unit enable the more powerful operation with high adjustment speed.

**Out of the box**  
solution



**DIRECT POWER CONNECTION**



## Positioning

Efficient, comfortable and fast!



Entering



Patient positioning

**5 - 6 SEC**  
IN OR-POSITION

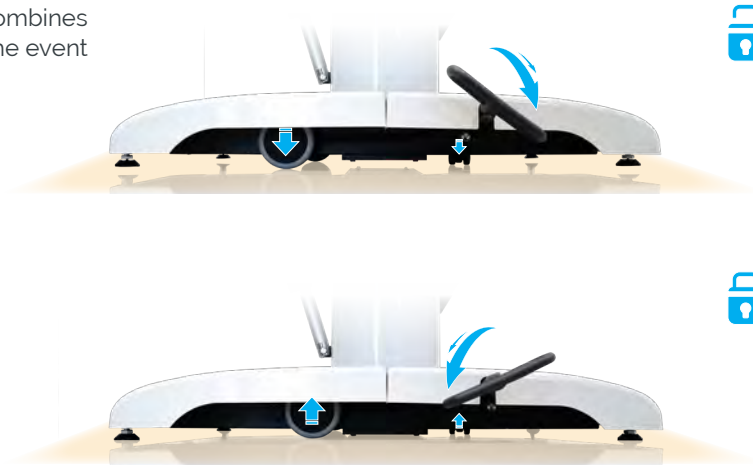
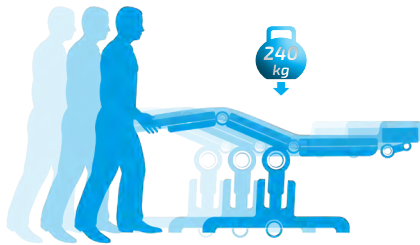


Surgery position

## Sturdy base with mono lifting column

### Stability / Maneuvering aid

Sturdy stand with three extendable castors combines high stability with simple maneuvering aid (in the event of a change of a location).



## Precise positioning of the head part

### Headrest

Mechanical adjustment options for comfortable and fine-tuned positioning of the patient's head, adapted to his individual body dimensions.



## Positioning by hand control

### Multifunctional manual keypad

- CPR button
- Reset button



- Auto run function



- 8 free configurable memory positions



## Positioning by foot control

### Optional: foot switch

2 memory positions (M1/M2). Item No.: 3351 1029



# Technical specifications



## Chassis

- Outside length 910 mm
- Outside width incl. foot pedal 600 mm
- Outside width incl. arm rests 845 mm
- White paint finish
- 2 pcs. double castors  $\varnothing$  100 mm
- 2 pcs. rigid castors  $\varnothing$  35 mm
- optional: foot keypad  
(2 Memory-Positionen, M1/M2)

## Upper frame

- 4-part support frame (head, back, seat, leg part)
- Length 1.950 – 2.230 mm
- Width of upholstery 600 mm
- Entry height 550 mm
- Removeable upholstery

	Angle	Dimensions (L x W)
- Head part	-27° / +180°	280 x 420 mm
- Back part	-23° / +85°	710 x 600 mm
- Seat part	-28° / +3°	510 x 600 mm
- Leg part	0° / +75°	490 x 530 mm
- Height adjustment		von 615 – 890 mm
- Armrests	0° / +180°	455 x 75 mm
- Legroom surgeon		485 – 760 mm
- CPR / flatposition		(height back part) 600 mm

## Electrical control

- All components according to IP54
- Manual keypad with 8 individually programmable memory positions, auto run function, reset button
- Foot keypad (optional)

### Electric Drives

- Back, seat, leg part, total up / down

## Lifting column

- Max. lifting 275 mm
- Max. patient weight 240 kg
- Motors IPX4 with HAL sensors, to be memorized

## Seat part / CPR

## Back part / Leg part

## Height adjustment / Legroom



## Application example

**assistTrend** Item No.: 2500 0002  
 + arm rest pair + Item No.: 3300 0000

**500 ECO** Item No.: 1500 0008



## Further technical details

- Chair has detachable, swiveling armrests made completely with PUR foam
- Detachable seat for service friendly access to electric components

- Max. load 240 kg  
 - Weight 90 kg

Subject to technical modifications.

## Paper rolls *stayClean* roll

- white embossed
- 2-ply
- 50 cm x 50 m
- Carton á 9 pieces

Page 75

Item No.: 3034 0021



## Colour card

Standard colour

anthracite Item No.: 3037 0052  
 + chrom Item No.: 3037 0056

„Pandoria Plus“  
 Page 109

„Tundra skai“  
 Page 108



# Accessories



FUNCTIONAL  
CLASS



**500 ECO**  
Item No. : 1500 0008



Multifunctional headrest

Item No.: 3351 1034



Foot switch with 2 free configurable memory position

Item No.: 3351 1029



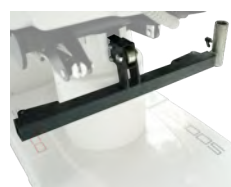
Paper roll holder

Item No.: 3351 1031



*stayClean roll* paper roll, white embossed, 2-ply, 50 cm x 50 m, carton à 9 pieces

Item No.: 3034 0021



Accessory mounting support, powder coated, with accessory holder, stainless steel

Item No.: 3351 1033



Accessory mounting support, stainless steel

Item No.: 3351 0037



Hand control holder

Item No.: 3351 1023



Monitor arm stainless steel, swiveling, incl. extendible I.V. Pole Ø 25 mm

Item No.: 3024 0014



I.V. Pole stainless steel Ø 25/18 mm, one-hand height-adjustable 1070-1660 mm, 4 hooks, max. 2 kg 84.4 lbs/hook, glass and holder

Item No. 3068 0000



Hand control holder for attachment onto an I.V. Pole Ø 25/18 mm, PVC

Item No.: 3351 1022



Side rails (right+left) swiveling incl. locking, upholstered

Item No.: 3351 1036



Padded arm board with universal joint, with wrist secure straps

Item No. 3078 0000



Norm rail 300 mm seat part

Item No.: 3321 0000



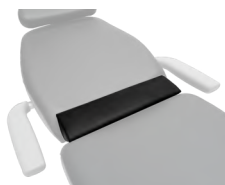
Instrument table 50 x 30 x 15 cm, height adjustable, swiveling, detachable, incl. adapter

Item No.: 3065 0000



Foot protection foil

Item No.: 3326 0000



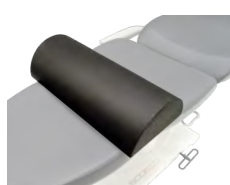
Trapeze cushion, wedge, for back/seat part, black

Item No.: 3022 0005



Full round bolster pillow, cushions knees, 50 x 15 cm, PUD-coated

Item No.: 3050 0000



Half round bolster pillow 60 x 28 x 14cm, cushions knees, PUD-coated

Item No.: 3019 0000



Bodystrap with Velcro straps 2-piece

Item No.: 3083 0000



Inlay head pillow

Item No.: 3325 0000



Instrument table *supportLine* height adjustable 73-98.5 cm

Item No.: 3351 0026



Instrument table *supportLine plus* height adjustable 93-118.5 cm

Item No.: 3351 0045

# Upgrade your OR to perfection.



*eyeForce*



*500 XLE*



*500 XLE comfort*



*500 bariatric*



*500 XLS*



*500 ECO*



*400 XL*



*motionLine*



*motionLine-E*



*surgiForce*



*surgiForce light*



*surgiTrend*



*surgiLine*



*stayClean wipes*



*stayClean*



*staySoft*



*stayClean roll*



*assistTrend*



*assistPro F*



*assistPro H*



*easyPro F*



*easyPro H*



*easyPro R*



*assistLine*



*supportLine*



*supportLine plus*