

# *Major Improvements for Slitlamp*

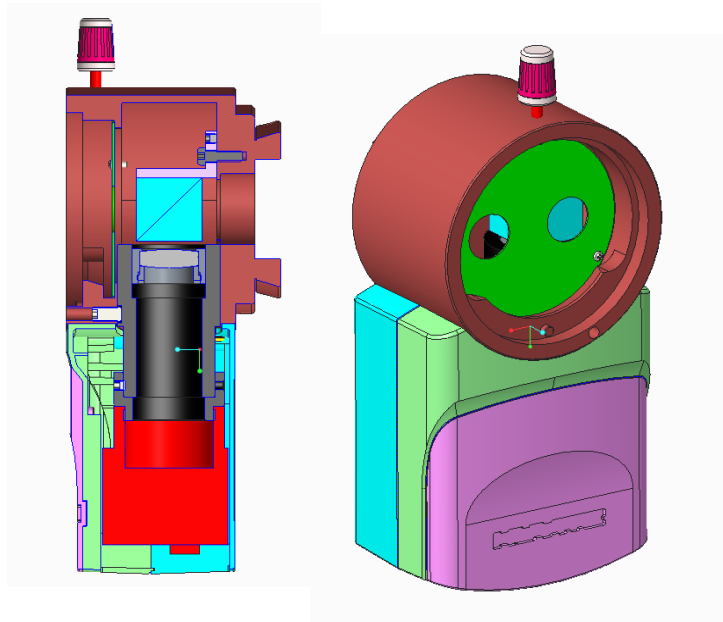
## ***Contents***

- 1. IMS Camera Improvement*
- 2. IMS Program Improvement*
- 3. The diameter of light Improvement*  
*-> From 12 To 14mm*
- 4. Eyepiece performance Improvement*
- 5. Slim Base plate for Unit Table Improvement (Optional)*

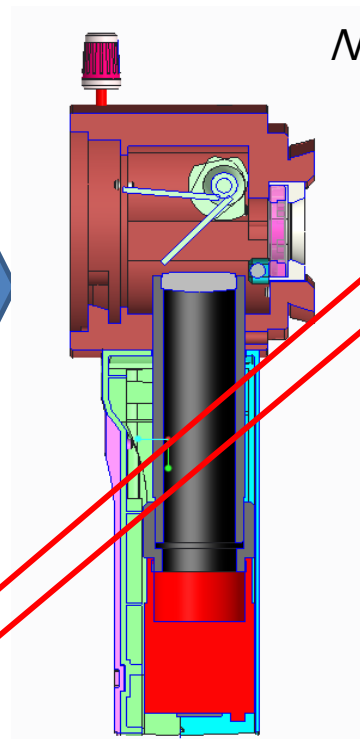
***Feb. 2019***

# 1. IMS Camera Improvement

*Current (10M)*



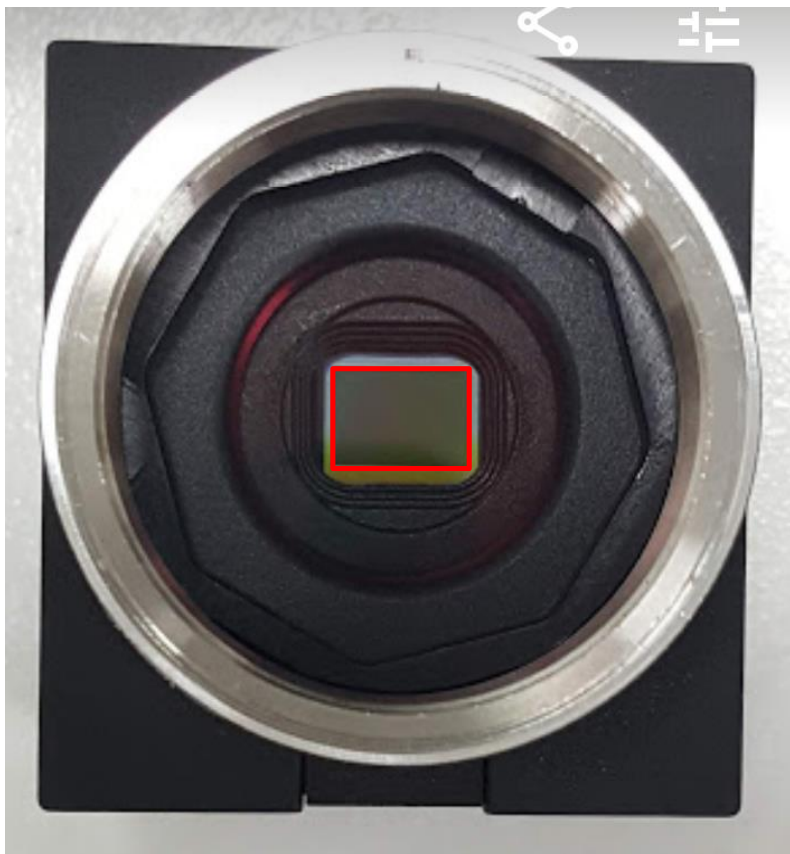
*New (5M)*



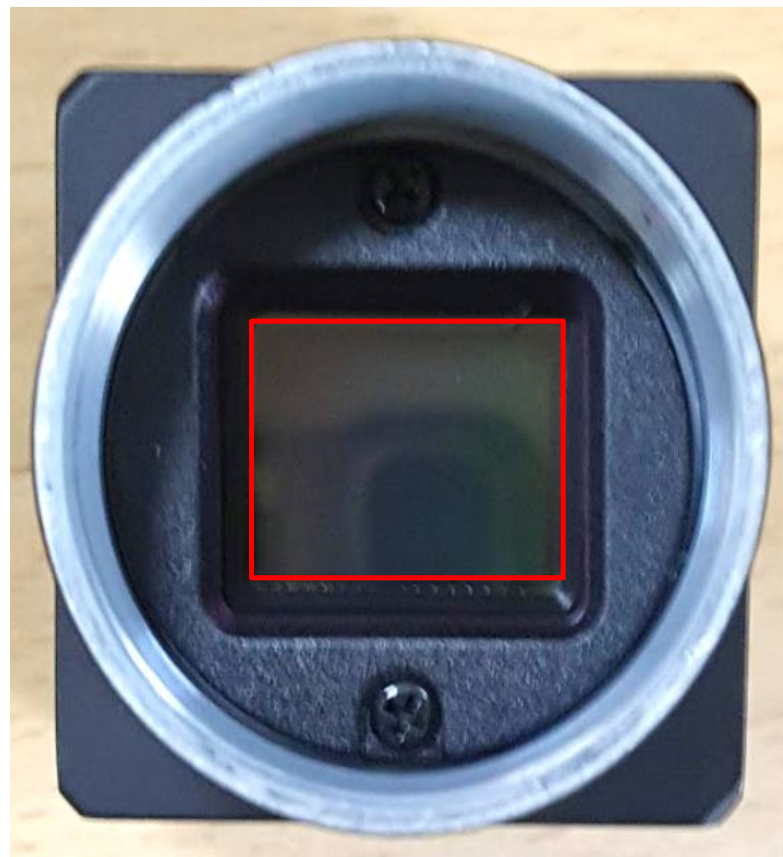
	<i>HIS-5000U (10M)</i>	<i>HIS-5000U3 (5M)</i>
<b>Interface</b>	<b>USB 2.0</b>	<b>USB 3.0</b>
<b>Sensor</b>	<b>1/1.8 inch</b>	<b>1 inch</b>
<b>Resolution</b>	<b>10M</b>	<b>5M</b>
<b>Beam Splitter (variable type)</b>	<b>50:50 (fixed type)</b>	<b>100:0 (Slit lamp only) / 30:70 (external Monitor)</b>
<b>Diaphragm (Adjust brightness &amp; focus )</b>	<b>N/A</b>	<b>Available</b>
<b>Left &amp; Right brightness difference</b>	<b>Available</b>	<b>N/A</b>

## 1-1. IMS Camera Improvement

*Current (10M, **1/1.8 inch**)*



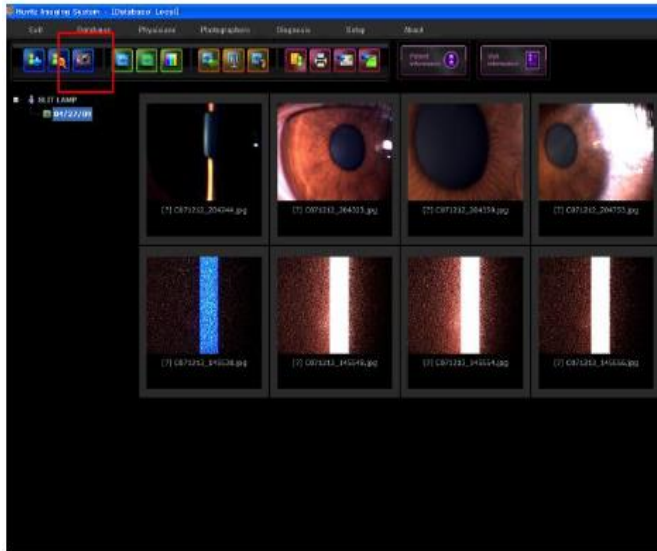
*New (5M, **1inch**)*



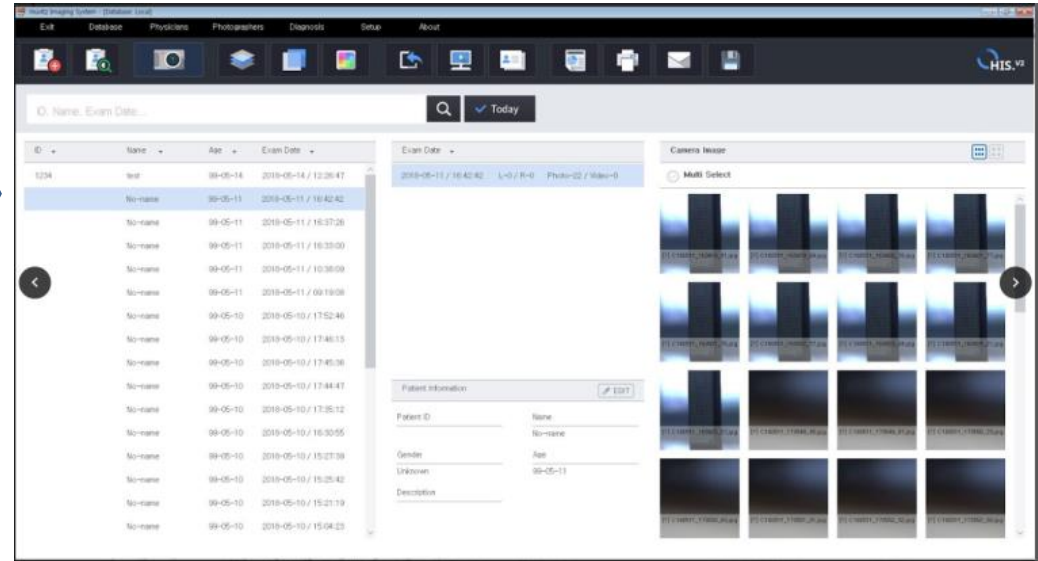
*Sensor area 4.2 times bigger compared to current one*

## 2. IMS Program Improvement

Current



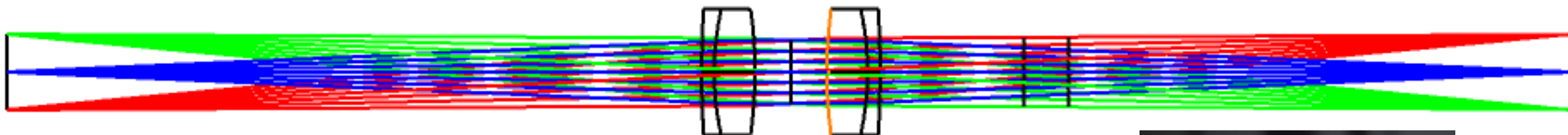
New



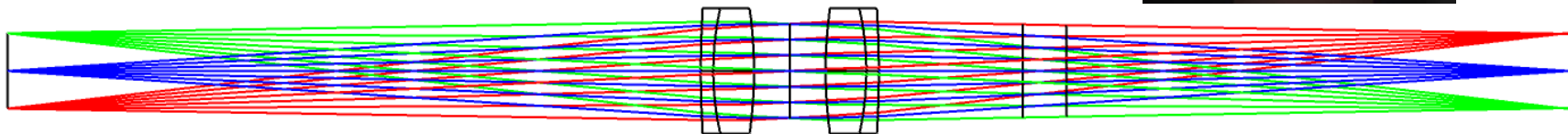
1. Program UI : Change to wide type so that you can see all information at a glance
2. Add time machine function: It shows 30 frames (images) of 2 seconds from the moment click joystick.  
Therefore, it provides choices for user to choose
3. Add flicker function : As it shows 30 frames (images) with different brightness of 2 seconds from the moment click joystick. advanced options can be provided to users
4. Add DICOM link function : HIS supports DICOM connection

### 3. The diameter of light Improvement

*Current (light diameter 12mm)*



*New (light diameter 14mm)*

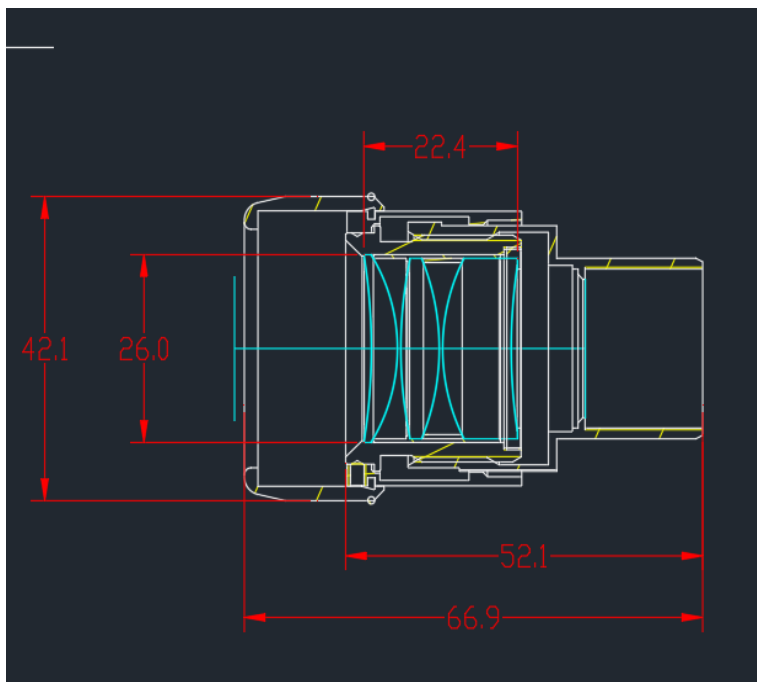


1. Light intensity increased by 15%
2. Wide light area can remove the blind area of eye

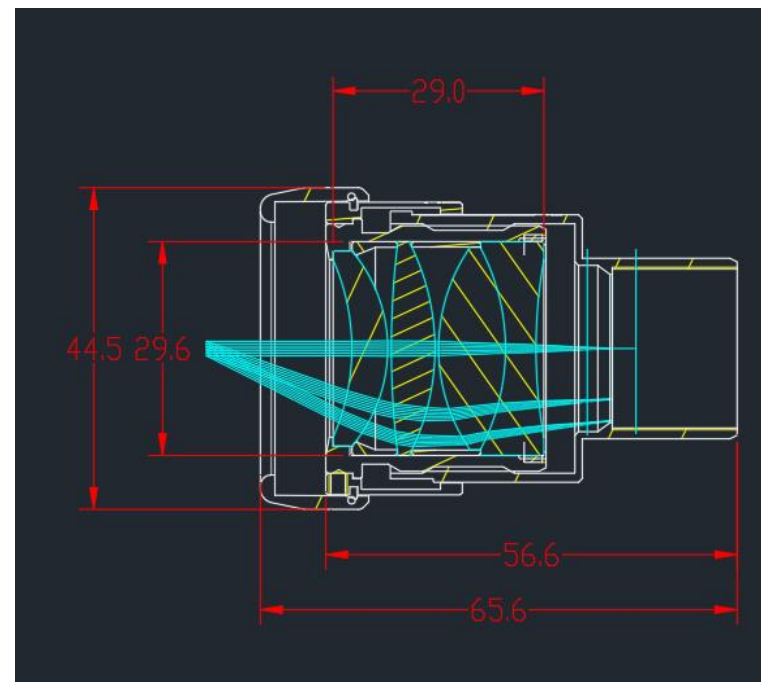
<b>Available type</b>	<b>Applied time line</b>
HS-5000	From On or Around Sep. 2019
HS-7000	From On or Around Apr. 2019

## 4. Eyepiece performance Improvement

*Current*



*New*



	<i>Current</i>	<i>New</i>
<i>Lens Diameter</i>	26mm	29.6mm

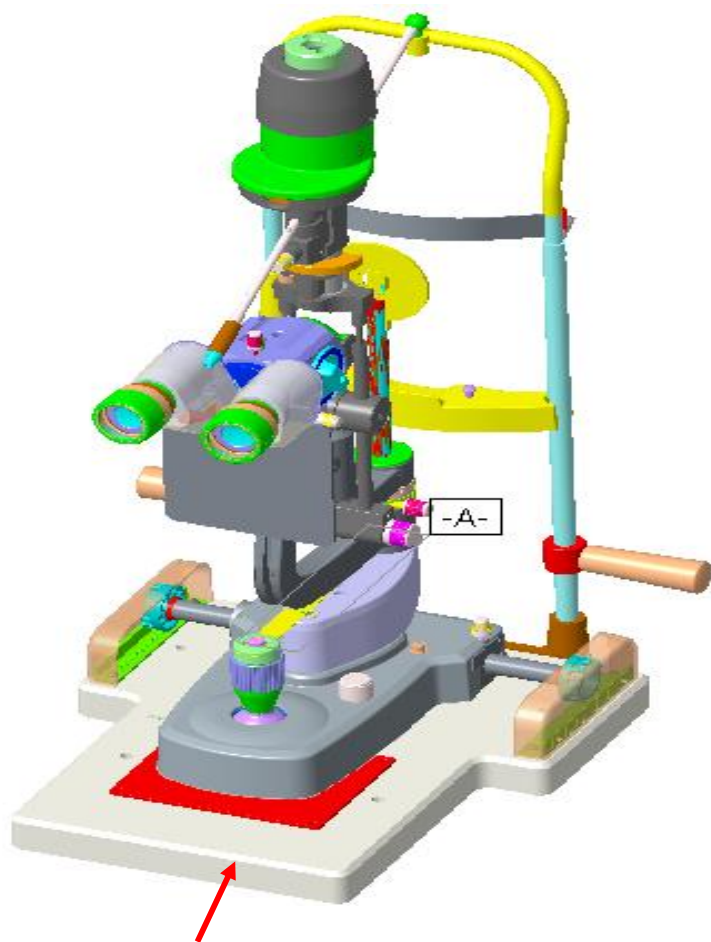
1. Improved to watch with glasses
2. Improved chromatic aberration

<b><i>Available type</i></b>	<b><i>Applied time line</i></b>
HS-5000/5500	From On or Around Jan. 2020
HS-7000/7500	From On or Around May. 2019

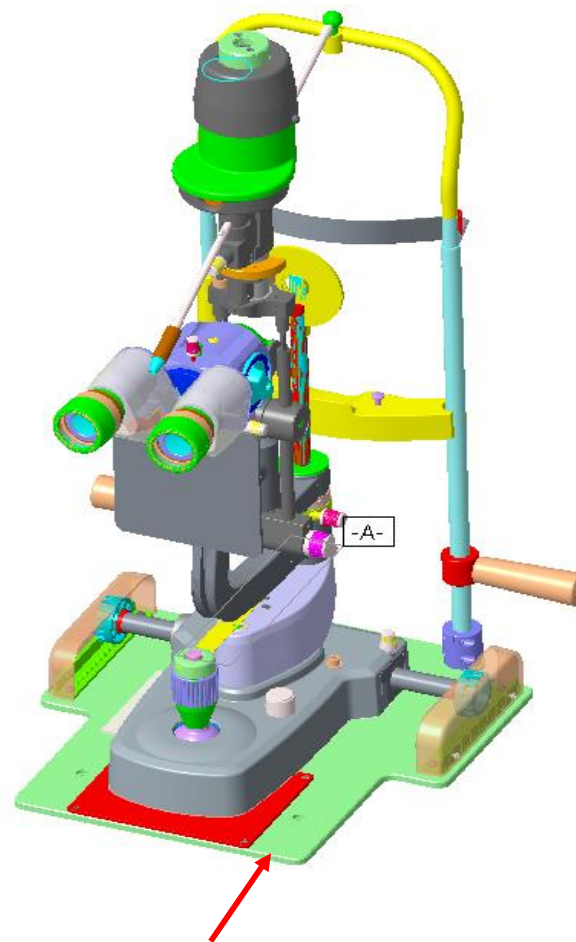


## 5. Slim Base plate for Unit Table Improvement (Optional)

-> This optional base plate is for other brand Unit Tables only to be fit with Huvitz Slit Lamp Series



Current (Depth:25mm Plastic)



New (Depth:6mm, Aluminum)

