

AUTO REF/KERATOMETER CRK 9000



OZMA

To measure a human eye with high precision,
OZMA Wavefront Technology can be the right answer.

Wavefront Technology measures the wavefront of light reflected from the retina and the refractive power with various sensors divided by sectors and analyzes them with extreme precision.



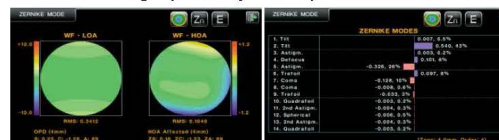
3D Auto Tracking

The cutting edged auto sensor and 3 dimensional movement mechanism enables you to track down a measuring focus of an eye automatically and complete the measurement perfectly even with an inexperienced user.



High Order Aberration Map

Besides the conventional data such as Spherical, Cylinder and Axis, the high order aberration data is displayed in a graphical Zernike refraction map for better understanding of patient's eyes and superior clinical decision making.



Color View Mode

The Full Color CCD camera and white LED light source in the auto Refracto-keratometer enable you to see eyes and contact lens fitting status which was only possible with slit lamps.



Motorized Chin rest & Auto Cutting Printer

Motorized chin rest allows to set the height of the measuring point comfortably and quickly. Automatic paper cutting and one touch paper change functions are new advantages of CRK-9000.



Measurement Mode

K/R Mode	Continuous Keratometry & Refractometry
REF Mode	Refractometry
KER Mode	Keratometry
CLBC Mode	Contact Lens Base Curve Measurement
KER P Mode	Peripheral Keratometry
Color View Mode	Color View & Contact Lens Fitting Assistance (White & Blue LED)

Refractometry

Vertex Distance(VD)	0.0, 12.0, 13.5, 15.0mm
Sphere(SPH)	-30.00D ~ +25.00D (VD=12mm) (Increments : 0.01/0.12/0.25D)
Cylinder(CYL)	-12.00D ~ 0.00D(or 0.00D ~ +12.00D)
Axis(Ax)	0° ~ 180° (Increments : 1°)
Cylinder Form	-, +, ±
Pupil Distance	10 ~ 85mm
Minimum Pupil Diameter	2.0mm

Keratometry

Radius of Curvature	5.0 ~ 13.0mm (Increments : 0.01mm)
Corneal Power	+25.96D ~ +67.50D (n=1.3375) (Increments : 0.01/0.12/0.25D)
Corneal Astigmatism	-15.00D ~ 0.00D (Increments : 0.01/0.12/0.25D)
Axis	0° ~ 180° (Increments : 1°)
Pupil/Iris Diameter	2.0 ~ 14.0mm (Increments : 0.01mm)

Others

Display	Tiltable 7inch TFT Touch LCD
Internal Printer	Thermal Line Printer with Auto Cutting Function
Power Supply	AC100-240V, 50/60Hz, 60W
Dimension/Weight	252(W) x 500(D) x 423(H) mm/20kg

Designs and details can be changed without prior notice for improvements