

# Simply Brilliant



SMARTSCOPE | PRO

# Performance

## High-quality digital fundus imaging

Our unique Smartscope PRO is a portable and versatile professional's choice at all locations, clinics or screening camps no matter how challenging your patients may be.

Including advanced image transfer using Wi-Fi, Smartscope PRO is a real breakthrough in digital hand-held fundus imaging providing state of the art convenience for your practise.

**Smartscope PRO - always ready to perform.**



# Precision

## Detailed view without compromises

Enabling non-mydriatic imaging and brilliant functionality by utilizing different modules for both retinal (EY4) and anterior segment (ES2) imaging.

Providing real multi use and multipurpose possibilities yet taking up just minimum space. Smartscope PRO fulfills the international ISO 10940 fundus camera standard.

**Smartscope PRO - for precise and reliable imaging.**



# Practicality

## Easy to learn, simple to use

When convenience and efficiency matters Smartscope PRO is just simply brilliant.

It provides cost-efficient fundus imaging for all healthcare professionals.

**Smartscope PRO - when practicality is a necessity.**



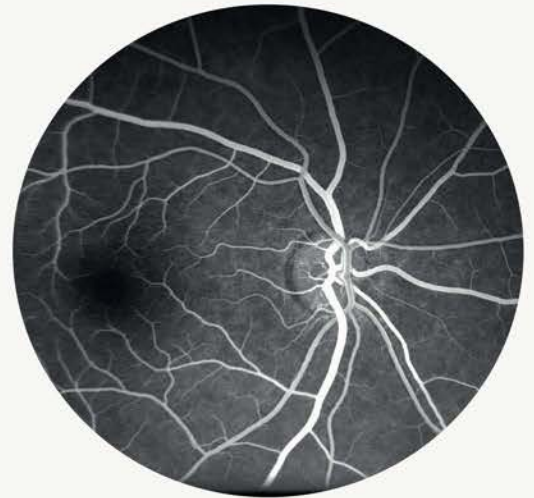
## CREATING EXPERIENCES

Multipurpose digital medical device

Wi-Fi for easy image transfer

Accurate and silent autofocus

Color, Red-free and IR imaging



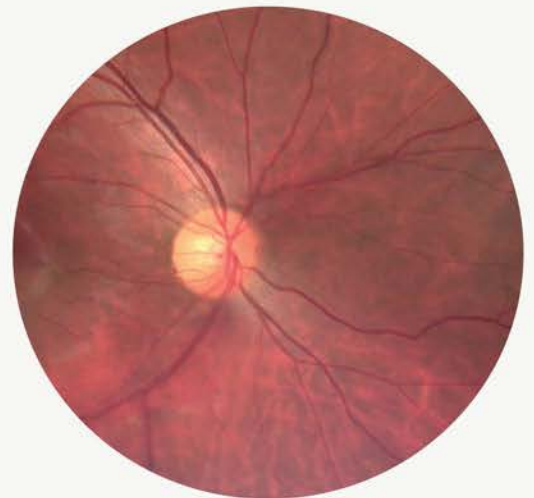
## ESSENTIAL FOR DIAGNOSTICS

40 degree field of view

9 internal fixation targets for peripheral imaging  
(total FOV up to 70 x 52)

5 megapixel sensor with 1536 x 1152 pixels resolution

EY4 optical resolution > 60 lp/mm (ISO 10940:2009)



## REGARDLESS OF CIRCUMSTANCES

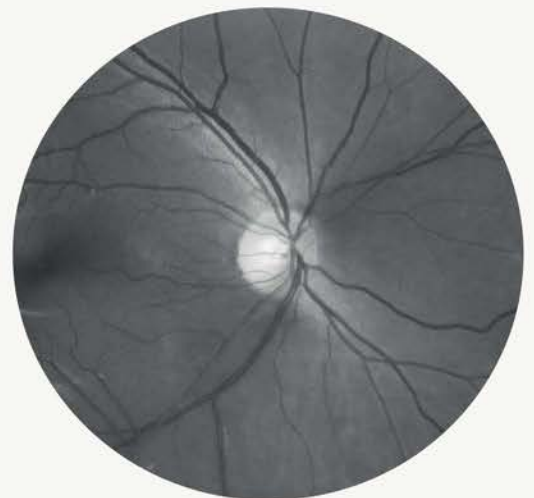
No dilation necessary

Hand-held camera with interchangeable lens modules

Perfect tool for special patients

Can be mounted to a slit lamp  
when used at doctor's office

Patient Data Management software  
with remote consultation possibility



# Technical specifications

Type	Non-mydratic digital fundus camera
Field of view	40 degrees
Camera sensor resolution	5 Mpix
Optical resolution	> 60 lp/mm (ISO 10940:2009)
Fixation targets	9 internal fixation targets for peripheral imaging (total FOV up to 70 x 52)
Focus range	Autofocus, -20D to +20D
Minimum pupil size	3.5 mm
Image and video format	JPEG, DICOM; MPEG-4/MPEG-1
Display	2.4" TFT-LCD
Memory	8GB
Power supply	Rechargeable Ni-MH Battery
Connectivity	Wi-Fi, USB
Image viewer and archive	Optomed Workstation software with DICOM
Type of photography	Color, Red-free, IR
Dimensions and weight	Smartscope M5: 82.30 (w) x 166,50 (h) x 66.50 (d) mm, 400 g
	Smartscope EY4: 67 (w) x 73 (h) x 160 (d) mm, 300 g
	Smartscope ES2: 79 (h) x 70 (d) mm, 92 g

